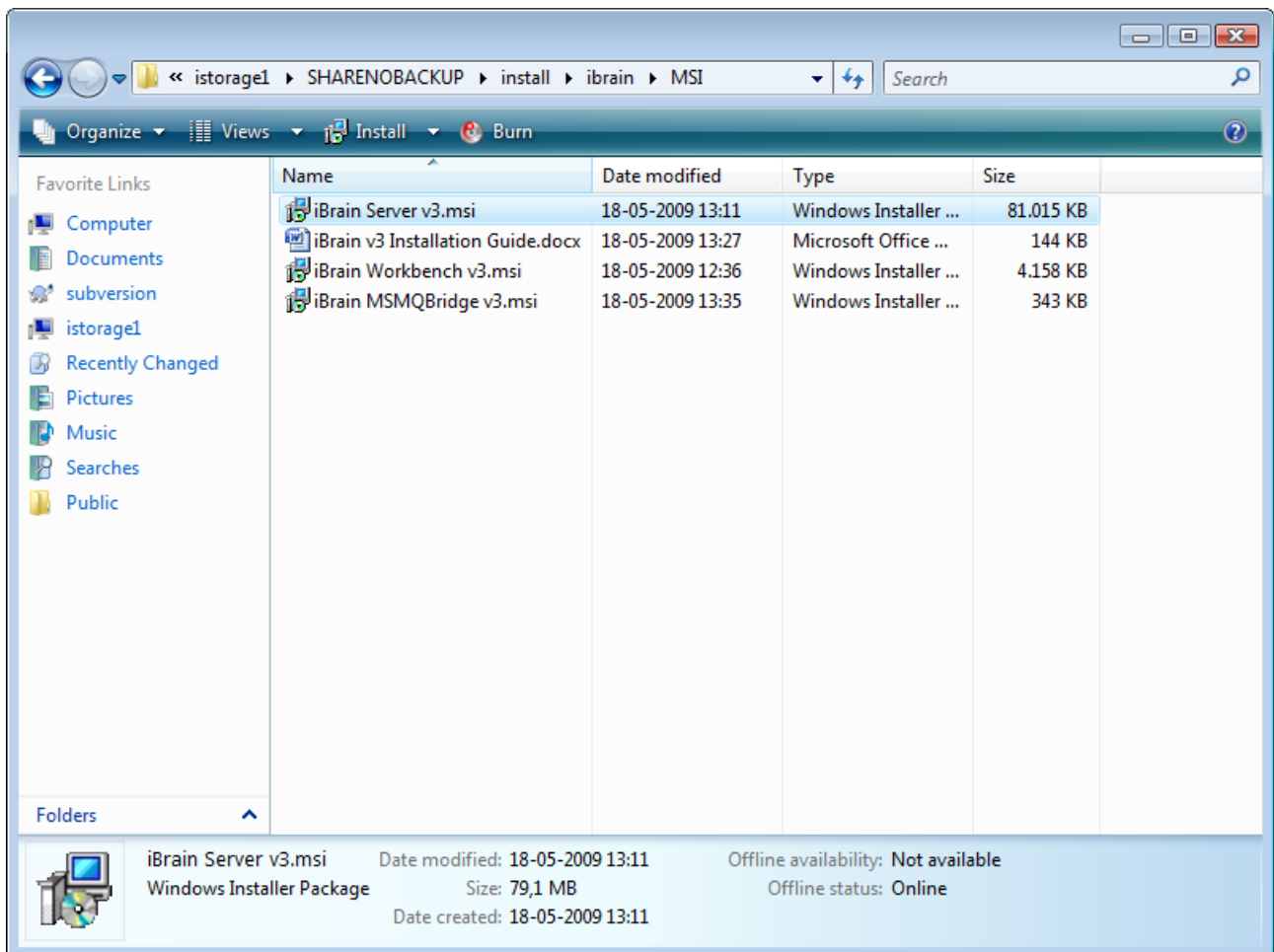


iBrain v3.0.1 Installation Guide

Installing iBrain Server v3

Run the installer "iBrain Server v3.msi", please have database connectivity information in place, as you will need these during the installation. Also note that you will be providing database connectivity information for both installing the database, and for running the database later on. These two does not have to be identical, as long as they have sufficient rights.



Upgrading an existing database [optional]

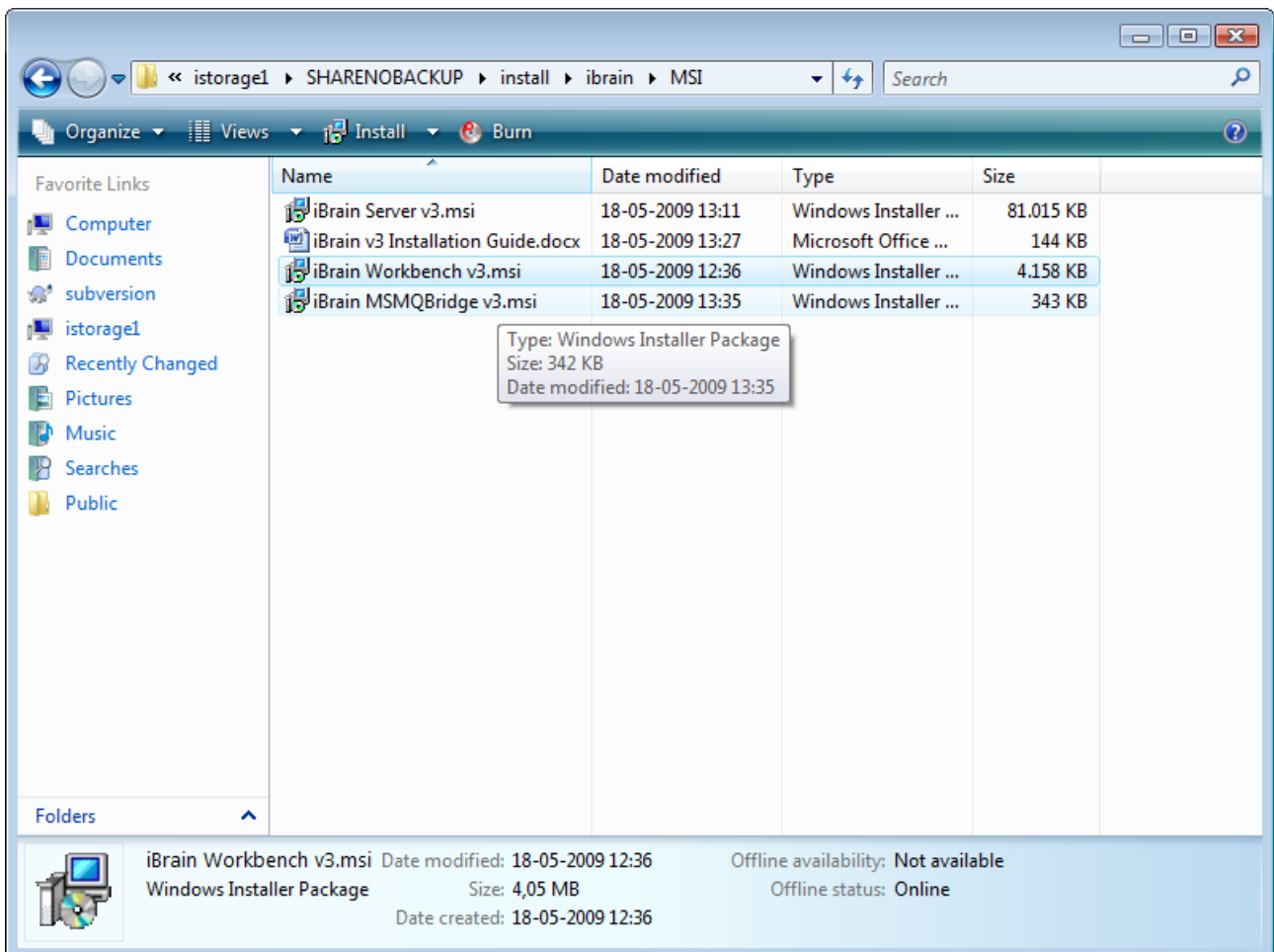
If iBrain v3 is already installed on the database, you need to run three scripts against the existing schema to upgrade it to version 3.0.1. If iBrain is installed on a clean schema, this step is not necessary.

The scripts should be run in the following order:

- Tables.sql
- Packages.sql
- Views.sql

Installing iBrain Workbench v3

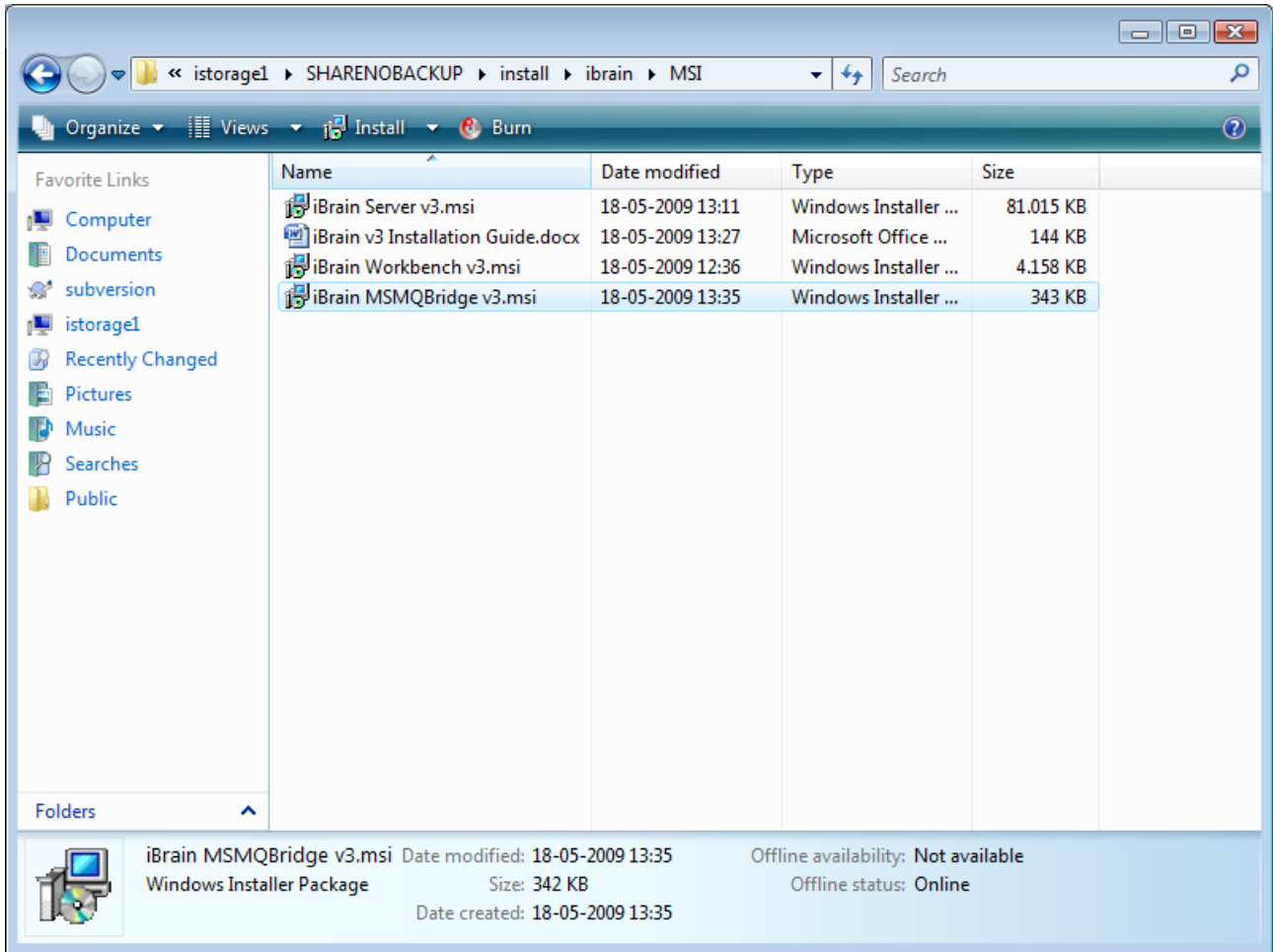
Run the installer "iBrain Workbench v3.msi", please have database connectivity information in place, as you will need these during the installation.



Installing MSMQBridge [optional]

Run the installer "iBrain MSMQBridge v3.msi". Afterwards run the visual studio command line tool installutil with "installutil MSMQBridgeService.exe" to install the Windows service. Before starting the service please correct the connection string in the "MSMQBridgeService.exe.config" and the MSMQHostNameFilter value.

The value of MSMQHostNameFilter can be anything you like as long as you use the same name when defining new MSMQ protocols in the iBrain workbench.



Installing iBrain Console v3 [optional]

Run the installer “iBrain Console v3.msi”, please have database connectivity information in place, as you will need these during the installation.